

Impact Assessment for Deep Sea Mineral Development and Mining

Sefanaia Nawadra
Director , EMG Division



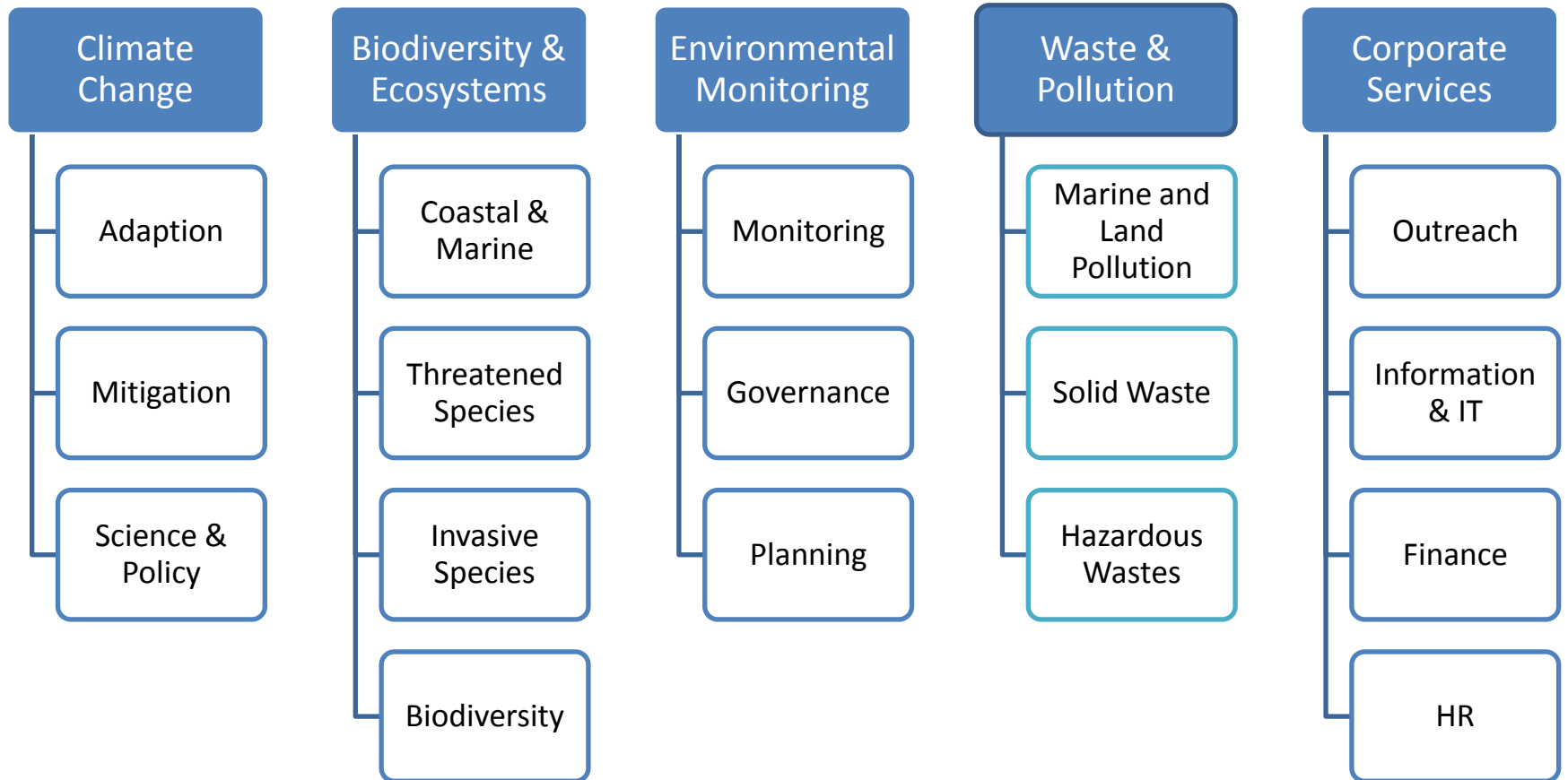
SPREP STRATEGIC PLAN 2011-2015

The Vision

Mandate – 1993 SPREP Agreement

*The Pacific environment, sustaining our
livelihoods and natural heritage in
harmony with our cultures*
To promote co-operation in the Pacific
region and provide assistance in order to
protect and improve its environment and to
ensure sustainable development for
present and future generations

Overview of SPREP Programmes



Underlying and Recurring Issues

- Is current knowledge enough? Access?
- Legacy of terrestrial mining.
- The issue of reputational risk
- Will it really deliver on expectations?
- What are the real costs and benefits?
- How will benefits be equitably distributed?
- Inter-generational security of benefits?
- Need for robust consultation and engagement

Underlying and Recurring Issues

- Higher expectations – shift to green economy
- Corporate responsibility – how to build trust?
- NGOs – how do we keep finger on pulse?
- Effective community engagement
- Best Practice –what are they?
- Opportunity to work together and develop a new approach
- Precautionary Approach

International Framework

- UNCLOS
- MEAs
- IMO Conventions on safety and environment
- Global and SIDS declarations/plans on SD
- Noumea and Waigani Conventions
- Pacific Oceanscape
- CROP Working Groups – Marine Sector and Sustainable Development

Environmental Assessment is a Planning Process!!!!

- Needs to be done at Two Levels
 - Strategic Assessments
 - Environmental Impact Assessment
- Continuous Improvement and adaptive management is key to effectiveness
- Prospecting needs to be subject to EA
- What are the acceptable limits of impact?

Multiple challenges require an integrated solution

Unsustainable land use

Pollution and Waste

Climate Change



Coastal Development

Invasive Species

Emerging Uses

Key Priorities of the Pacific Oceanscape

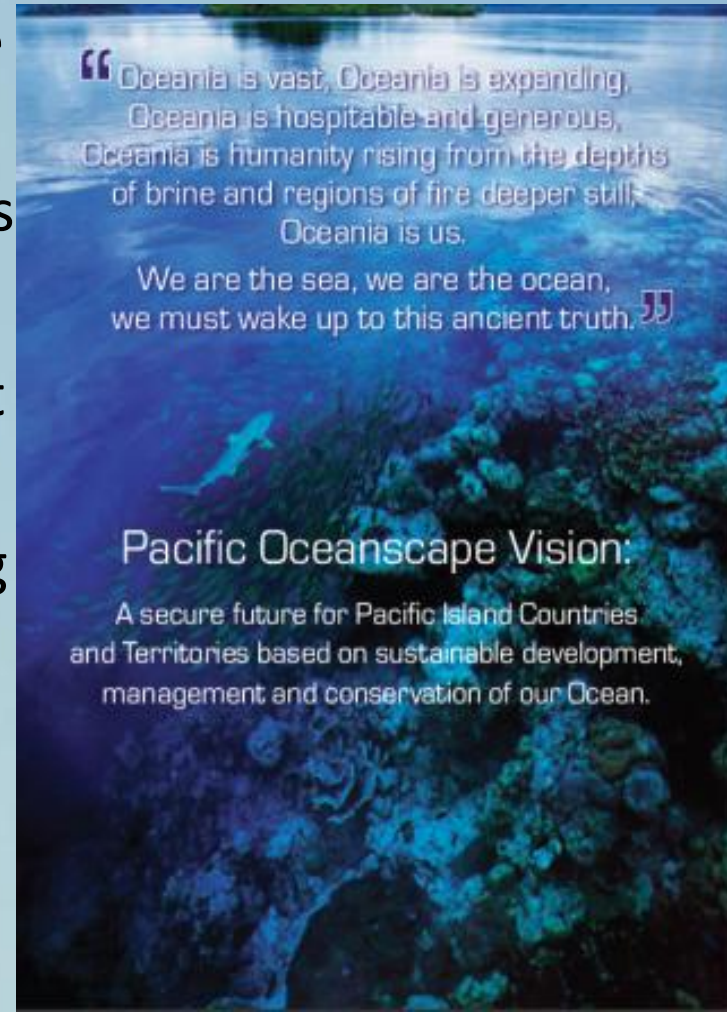
It is not conservation but integrated resource management

- 1) Jurisdictional Rights and Responsibilities
- 2) Good Ocean Governance
- 3) Sustainable development, management and conservation
- 4) Listening, Learning, Liaising and Leading

Marine spatial planning

Ocean monitoring

Global not just pacific resource!!!



Strategic Environmental Assessments

- EIA's difficult to do within a vacuum
- Ideally carried out before the EIA
- It's applied on wider scale – geographic, sector
- Looks at wider impacts, accumulative impacts
- We have done before only different names
- Same as EIA process but provides context within which project EIAs need to be considered



Sustainability Appraisal

Ongoing Community and Government Agency Consultation



Early Engagement

Screening

Scoping

Assessment

Review and Decision

**Mitigation and
Management Planning**

Early Engagement

- What we are doing now.
- Have the legislation and policy in place
- Standards and Guidelines
- Carry out strategic assessments and planning
- Establishing baselines
- Identification and dialogue with stakeholders
- Understanding issues and concerns

Screening

- Deep sea mining needs to go through EIA
- Prospecting needs some sort of environmental assessment – research guidelines

Scoping

- Assistance with setting the terms of reference
 - DSM specific regional guidelines
 - Inclusive process in formulating guidelines
 - Guidance on public consultation
 - Training to regulatory agencies in its application
 - See if we can consider accumulative impacts
- Technical assistance to regulatory agencies
- Prescribe how the assessments are presented

Assessment

- Vetting and registration of consultants
- Engaging local institutions to build capacity
- Observers as part of the assessment team

Review and Decision

- Present in way that can be understood
- It needs to assist decision making
- Technical review facility
- Financing mechanism
- Public consultation and engagement

Mitigation and Management

- This is weakest part of EIA process
- Needs to be implemented as agreed
- Includes monitoring how to do for DSM?
- If we don't do this part properly then we should not do EIA's at all
- Decisions based on best available information but always lots of assumptions
- Continual improvement and adaptive management

SPREP's role on DSM

- Regional Mandate for Environment
- Work with SPC and others on EIA Guidelines
- Advice and support on strategic assessments
- Look at provisions under Noumea Convention
- Inform SPREP council and get their approval on guidance documents
- Keep engaged with the DSM process
- How to finance support in long term



Vinaka